

Above:

Panoramic photosimulation of Bangor Hydro Electric’s 115 kV transmission line looking south southwest from viewpoint A on Georges Pond. See pages 2 and 3 for “normal” views from the same viewpoint.

Left:

Viewpoint Location Map of Georges Pond illustrating the angle of view from Location A. The top portion of Poles 192 and 193 will be visible from this location. See photosimulation on page 3.



Existing view looking south southwest from viewpoint A on Georges Pond. Photograph taken at 9:04 AM on August 17, 2010. Viewer should hold this image, when printed at 11"x17", approximately 20" from eye to replicate actual view.



Photosimulation of Bangor Hydro Electric's 115 kV transmission line looking south southwest from viewpoint A on Georges Pond. The top portion of Poles 192 and 193 will be visible 1,100' to 1,200' from this location. Viewer should hold this image, when printed at 11"x17", approximately 20" from eye to replicate actual view.



Above:

Panoramic photosimulation of Bangor Hydro Electric's 115 kV transmission line looking west southwest from viewpoint B on Georges Pond. See pages 5 and 6 for "normal" views from the same viewpoint.

Left:

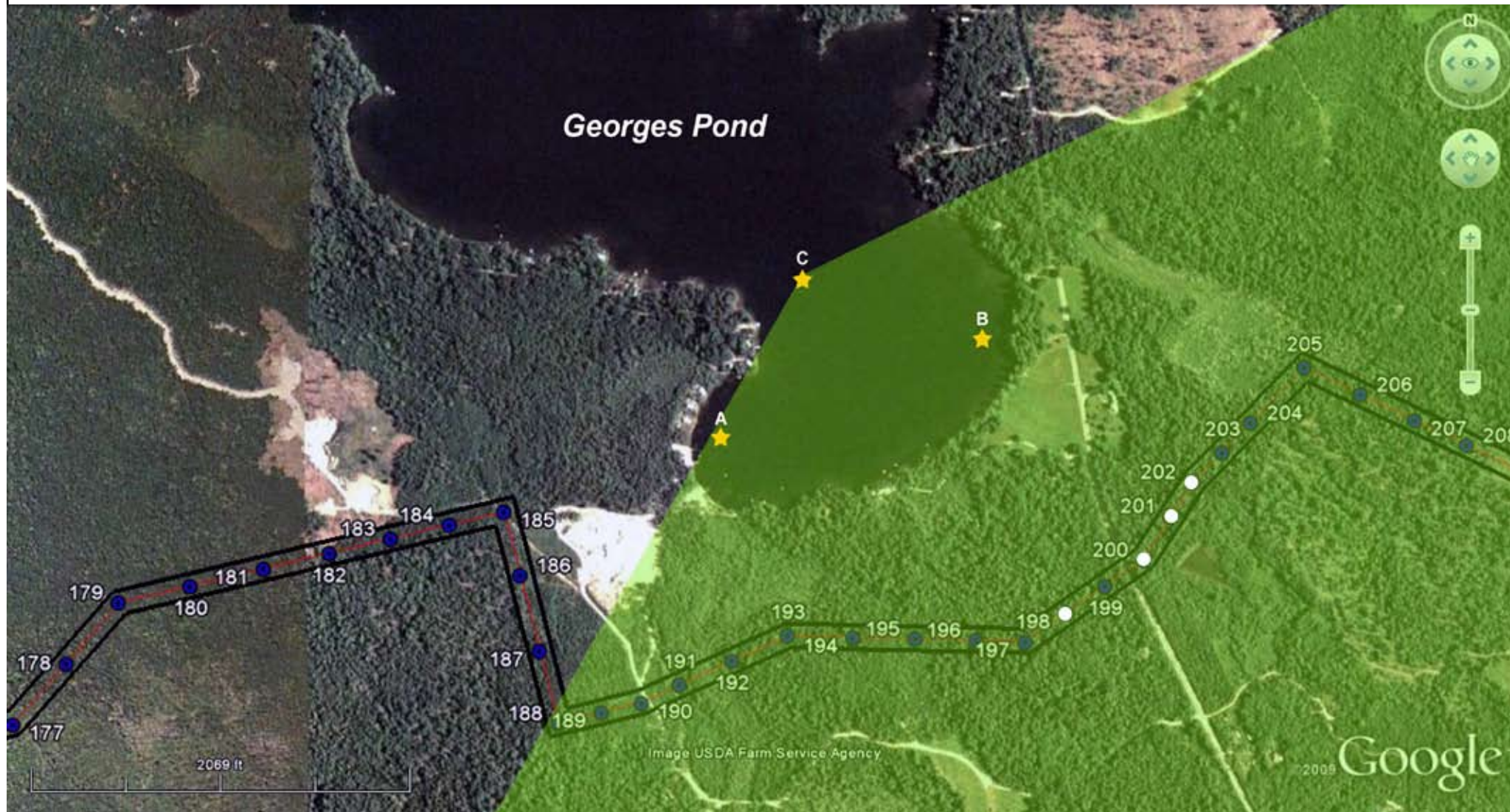
Viewpoint Location Map of Georges Pond illustrating the angle of view from Location B. The top portion of Poles 185, 186, and 187 will be visible from this location. See photosimulation on page 6.



Existing view looking west southwest from viewpoint B on Georges Pond. Photograph taken at 10:12 AM on August 17, 2010. Viewer should hold this image, when printed at 11"x17", approximately 20" from eye to replicate actual view.



Photosimulation of Bangor Hydro Electric's 115 kV transmission line looking west southwest from viewpoint B on Georges Pond. The top portion of Poles 185, 186, and 187 will be visible 2,750' to 2,900' from this location. Viewer should hold this image, when printed at 11"x17", approximately 20" from eye to replicate actual view.



Above:

Panoramic photosimulation of Bangor Hydro Electric's 115 kV transmission line looking east to south from viewpoint C on Georges Pond. See pages 8 and 9 for "normal" views from the same viewpoint.

Left:

Viewpoint Location Map of Georges Pond illustrating the angle of view from Location C. The top portion of Poles 198, 200, 201, and 202 will be visible from this location. See photosimulation on page 9.



Existing view looking east southeast from viewpoint C on Georges Pond. Photograph taken at 7:36 AM on August 17, 2010. Morning fog had just burned off the pond. Viewer should hold this image, when printed at 11"x17", approximately 18" from eye to replicate actual view.



Photosimulation of Bangor Hydro Electric's 115 kV transmission line looking east southeast from viewpoint C on Georges Pond. The top portion of Poles 198, 200, 201, and 202 will be visible 2,250' to 2,400' from this location. Viewer should hold this image, when printed at 11"x17", approximately 18" from eye to replicate actual view.